

Range 22-6

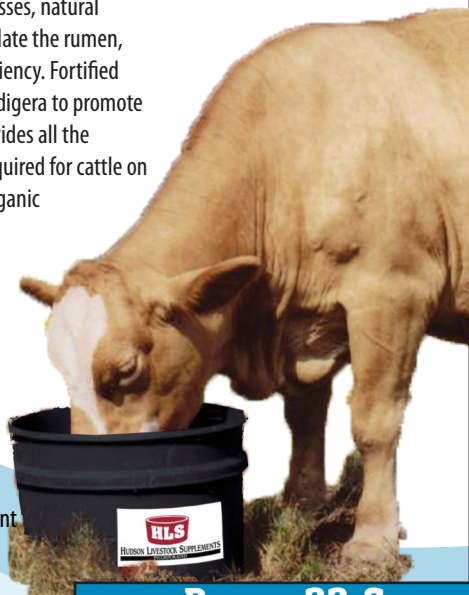
Formulated for cattle on extremely poor quality forage

HLS™ Range 22-6 is formulated to supplement fair to late season pastures. Range 22-6 uses high sugar content molasses, natural proteins and a low level of urea to effectively stimulate the rumen, promoting feed intake and maximizing rumen efficiency. Fortified with **COMAX** a natural feed additive and Yucca Schidigera to promote bacterial growth and increase rumen function. Provides all the necessary minerals, vitamins and trace minerals required for cattle on pasture. Range 22-6 has the added benefit of an organic source of Selenium, which improves reproductive performance and immune response.

Advantages of Range 22-6

- ★ High energy, high digestibility, high sugar content
- ★ High quality proteins
- ★ Multiple sources of protein
- ★ Enhances rumen fermentation
- ★ Stronger, healthier calves
- ★ Improves digestion of forages
- ★ No salt or fillers
- ★ Low level of urea (6% NPN) to stimulate rumen bacteria
- ★ High levels of minerals and vitamins for growing animals
- ★ Low moisture content < 4%
- ★ Weather resistant
- ★ No waste
- ★ Selenium yeast
- ★ Improved all around health

**CAUTION: DUE TO HIGH COPPER LEVELS
DO NOT FEED TO SHEEP.
USE AS DIRECTED.**



Range 22-6

GUARANTEED ANALYSIS

Crude Protein (Min).....	22.0%	Potassium (Min).....	2.5%
Not more than 6% equivalent protein from non-protein nitrogen.		Zinc (Min).....	1200 ppm
Crude Fat (Min).....	3.0%	Manganese (Min).....	1000 ppm
Crude Fiber (Max).....	2.5%	Copper (Min).....	350 ppm
Calcium (Min).....	1.5%	Cobalt (Min).....	45 ppm
Calcium (Max).....	2.0%	Iodine (Min).....	26 ppm
Phosphorous (Min).....	1.5%	Selenium (Min).....	9 ppm
Salt.....	0 added	Vitamin A (Min)....	150,000 IU/lb
Magnesium (Min).....	1.0%	Vitamin D (Min)....	38,000 IU/lb
		Vitamin E (Min).....	100 IU/lb
		Total Sugars (as invert) (Min)	34%

Manufactured By:



HUDSON LIVESTOCK SUPPLEMENTS
INCORPORATED

8193 Thompson Road • Miles, Texas 76861
325-659-3992 • 1-800-750-9608